

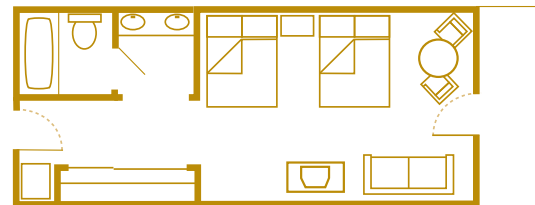
# Disney's Yacht and Beach Club Resorts

The elegant lakeside accommodations of this sand-and-surf motif Disney Deluxe Resort and Disney Deluxe Villa Resort will transport your clients to a lazy 1870s mid-Atlantic beach holiday. *Disney's Beach Club Villas* offer spacious accommodations with plenty of room for everyone.

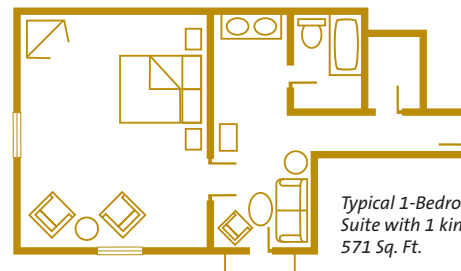


## Room Accommodations

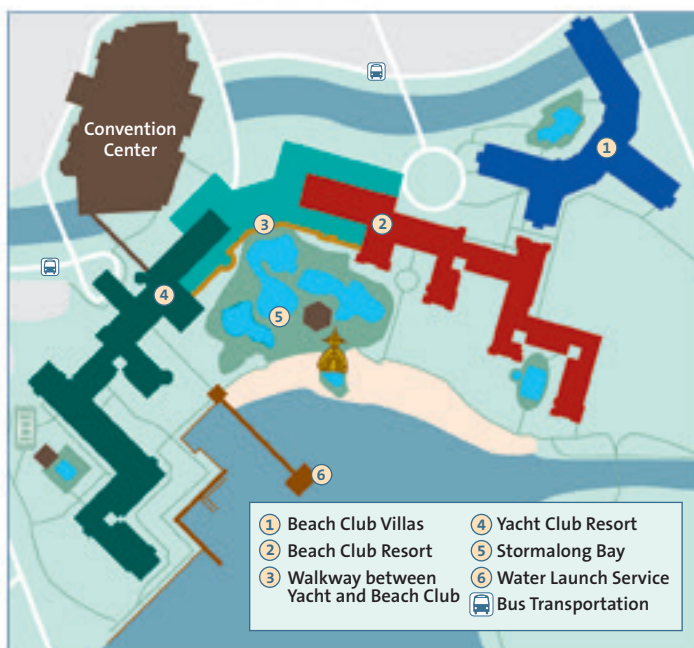
- 1,170 Rooms, 27 Suites, 282 Villas.
- Rooms accommodate up to five Guests, plus one child under age 3 in a crib.
- All rooms have either two queen-size beds, two double beds, or one king-size bed and a day bed, and private balcony.
- Guests choosing **Club Level** accommodations at the *Regatta* and *Stone Harbor* Clubs receive personalized concierge service, and lounge with continental breakfast, midday snacks and evening wine, hors d'oeuvres, cordials and dessert.



Typical Standard Room with 2 queen beds and 1 day bed, 400 Sq. Ft.



Typical 1-Bedroom Beach Club Suite with 1 king bed and 1 day bed, 571 Sq. Ft.





Standard Room



Beach Club 2-Bedroom Suite



Beach Club 1-Bedroom Suite



Yacht Club 2-Bedroom Turret Suite

## Dining

### Signature Dining

- *Yachtsman Steakhouse* – Dinner specializing in oak-grilled steaks, poultry, seafood, vegetarian entrées and more.

### Casual Dining

- *Captain's Grille* – Breakfast, lunch and dinner cafe-style restaurant that offers American dishes.
- *Cape May Cafe* – An all-you-care-to-enjoy dinner seafood buffet...and much more! Crab legs, mussels, and clams freshly steamed center stage, as well as carved meats, ribs, salads and pastas.
- *Beaches & Cream Soda Shop* – Lunch and dinner featuring snacks and a classic American soda fountain.

### Disney Character Dining

- *Beach Club Breakfast Buffet at Cape May Cafe* – All-you-care-to-enjoy buffet breakfast.

### Quick-Service Dining

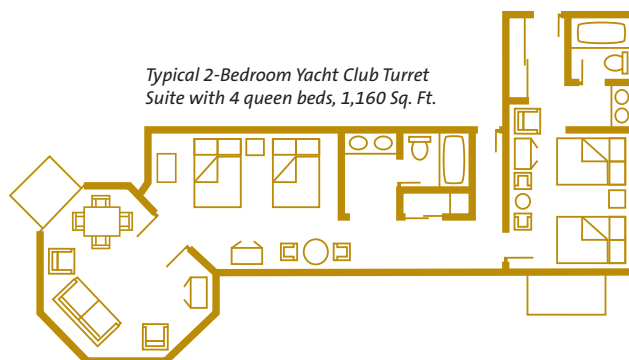
- *Beach Club Marketplace* – This hometown market and bakery features pastries, salads and gourmet sandwiches.
- *Hurricane Hanna's Waterside Bar and Grill* – Lunch, dinner and snacks.

### Other Dining Options

- Lounges serving appetizers, room service, and the nearby *Disney's BoardWalk* entertainment district offers additional dining options.



Typical 2-Bedroom Beach Club Suite with 1 king bed, 2 queen beds and 1 day bed, 1,095 Sq. Ft.



Typical 2-Bedroom Yacht Club Turret Suite with 4 queen beds, 1,160 Sq. Ft.





## Disney's Beach Club Villas

### Villa Accommodations

#### Two-Bedroom Villas

accommodate up to eight Guests, plus one child under age 3 in a crib, and offer a fully equipped kitchen, master bedroom, second bedroom, two full bathrooms, washer and dryer, DVD player and private porch or balcony.

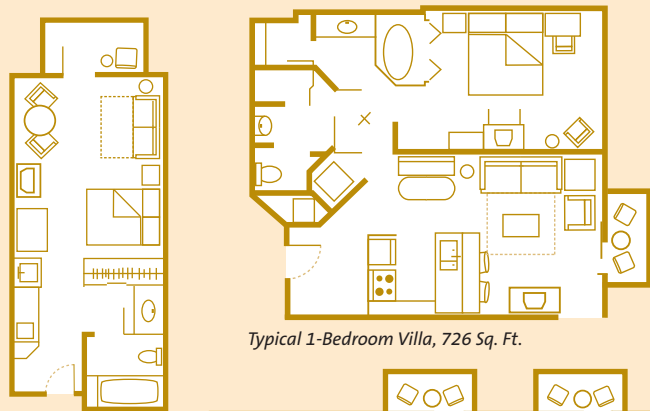
#### One-Bedroom Villas

accommodate up to four Guests, plus one child under age 3 in a crib, and offer a fully equipped kitchen, king-size bed in master bedroom and queen-size sleeper sofa in living room, washer and dryer and private porch or balcony.

**Deluxe Studios** accommodate up to four Guests, plus one child under age 3 in a crib, and have a kitchenette, one queen-size bed, double-size sleeper sofa and private porch or balcony.

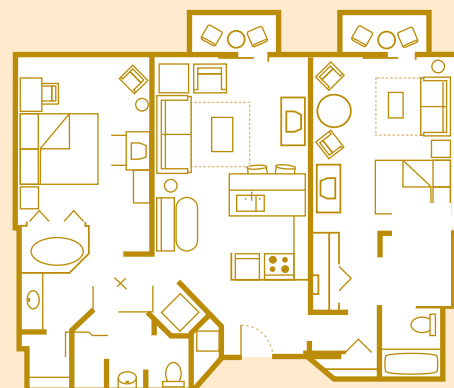


2-Bedroom Villa



Typical 1-Bedroom Villa, 726 Sq. Ft.

Typical Deluxe Studio,  
356 Sq. Ft.



Typical 2-Bedroom Villa, 1,083 Sq. Ft.

### Recreation

- Three-acre aquatic playground features heated sand-bottom pool, *Stormalong Bay*, themed waterslide, whirlpools, heated leisure pools, children's pool, health club, white sand beach for sunbathing, tennis, fishing, marina watercraft rental, bike rental, arcade, a hair salon and recreation activities including Disney movies under the stars.

### Just for Kids

- *Sandcastle Club* – A fun night of supervised activities, including arts and crafts, Disney movies, video games and more. Available from 4:30 pm until midnight. Dinner and a snack are included in the cost of the service.

### Transportation

- Within walking distance to *Epcot*® and *Disney's Hollywood Studios*®.
- Water launch service to *Epcot*, *Disney's Hollywood Studios* and other select *Disney Resort* hotels.
- Bus service to other *Walt Disney World*® Resort locations.